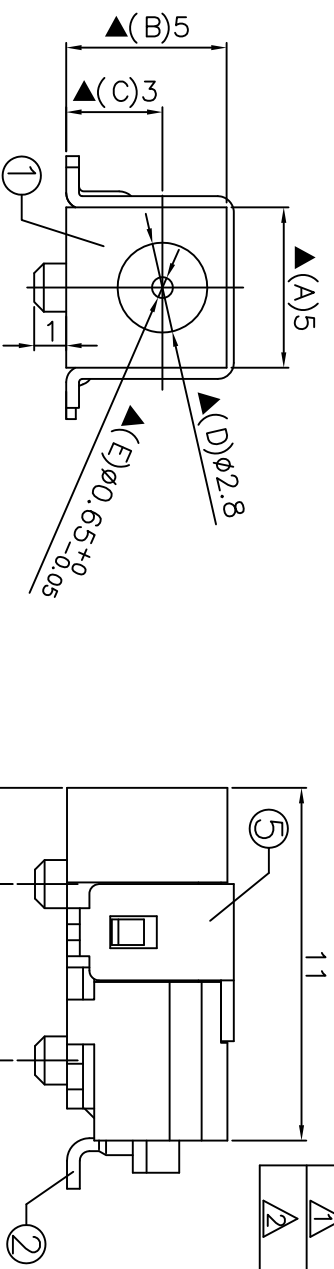
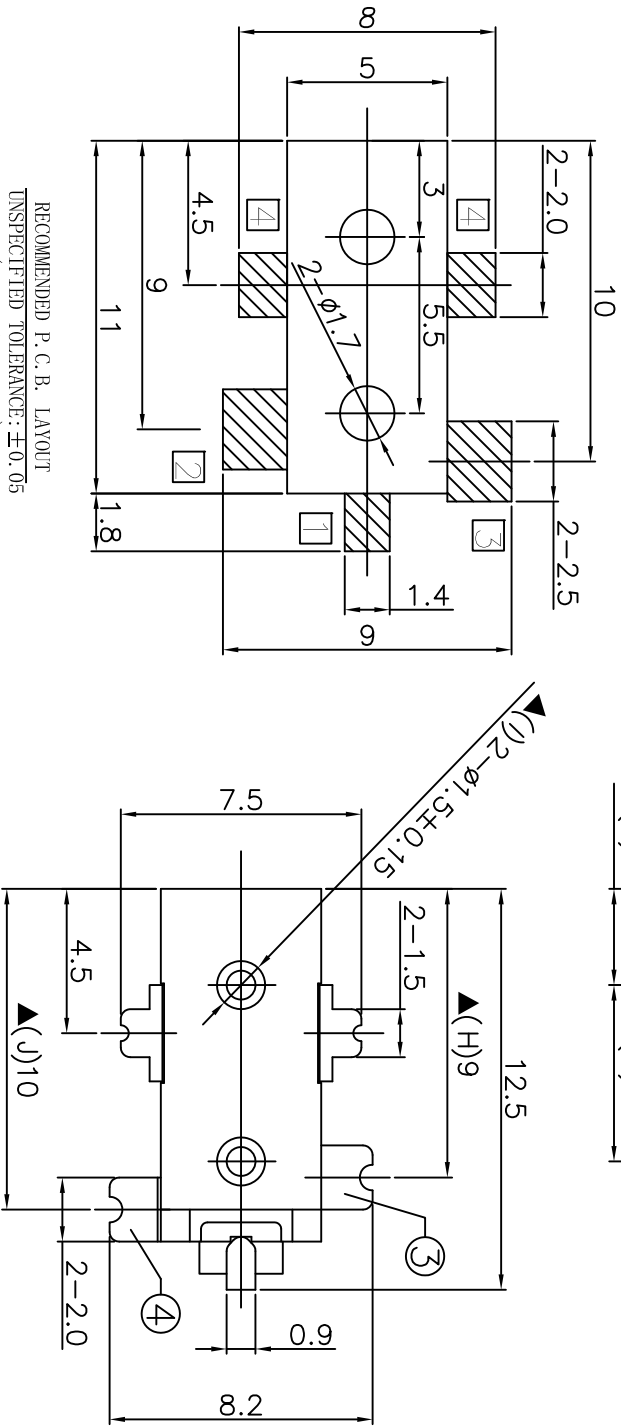


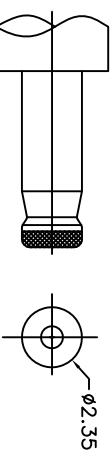
REV. LTR.	DESCRIPTION	SIGN	DATE
A	Update drawing	Shangzaiwuko	2011.04.18
A	增加中心PIN標示	Shangzaiwuko	2014.07.08



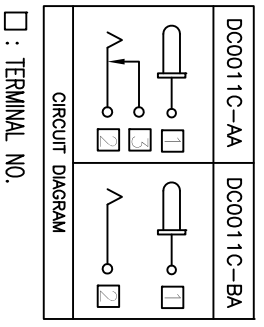
Ordering information:
 DC0011C - A
 (1) Series No. (2)X3
 (2): Schematic option: A, B
 (3): A: $\phi 0.65$



RECOMMENDED P. C. B. LAYOUT
 UNSPECIFIED TOLERANCE: ± 0.05
 (COPPER-SIDED VIEW)



DC MATE PLUG



SPECIFICATION

- Rating : DC 16V 2.5A ;
- Contact resistance : $\leq 50m\Omega$;
After test: $\leq 100m\Omega$;
- Insulation resistance : $\geq 100M\Omega$ (DC500V) ;
After test: $\leq 50M\Omega$;
- Withstanding voltage : 500VAC ;
- Insertion and extraction force : 3-30N ;
- life test : 5,000 cycles ;
- Operation temperature range: $-20^{\circ}C \sim 70^{\circ}C$;
- Preservative temperature range: $-40^{\circ}C \sim 85^{\circ}C$;
- Sign "▲" is importance dimension.

NO.	DESCRIPTION	QTY	MATERIAL	PART NO.	REMARK
⑤	Shell	1	Brass t0.4	DC0011C-W1	Silver plating
④	Shunt terminal	1	Brass t0.4	DC0011B-03	Silver plating
③	Tip spring	1	Stainless steel t0.25	DC0011B-02	Silver plating
②	Center pin	1	Brass	DC0011B-99A	Silver plating
①	Housing	1	PA9T UL94V-0	DC0011B-S1	Black

UNIT:MM	TYPE:	MODEL NO:	PAPER NO: A4	PAGE 1 OF 1
	DC POWER JACK	DC0011C-A		
DESIGNER BY:	Zhang,Xk	2011.04.18	TOLERANCE	ANGLES
CHECK BY:			± 0.3	$\pm 2^{\circ}$
APPROVED BY:			SCALE	VER
			FULL	2

丞永實業有限公司
 BLUE SOURCES ELECTRONICS CO.,LTD.